

Test Report

Report No.: CTT2405015894EN

Page 1 of 3

Applicant: GUANGZHOU RUIER CLOTHING LIMITED COMPANY

Address: 3RD FLOOR NO.2. BUILDING XIYUANNAN STREET, TANGCHONG VILLAGE, XINSHI TOWN
BAIYUN DISTRICT, GUANGZHOU CITY, CHINA

Sample Received Date: May 25, 2024

Completed Date: Jun. 04, 2024

Report Date: Jun. 04, 2024

The following merchandise was (were) submitted and identified on behalf of the applicant as:

Sample Name: 25mm alloy spike pendant

Model No.: 009441

Test Result(s): Please refer to next page(s).

Test Requested and Conclusion(s):

No.	Standard and Requirement	Conclusion(s)
1	Annex XVII items 27 of the REACH Regulation (EC) No 1907/2006 & amended (EC) No. 552/2009 - Nickel Release	PASS

Signed for and on Behalf of CTT:



Tony Ye
Technical Manager



Verification Report

This test report is issued by the company subject to its General Conditions of Services and accessible at <http://www.cttlab.com/order/202103190908290166.pdf>. The sample is provided by the applicant; our company is not responsible for the integrity, authenticity and identification information of the sample. Unless otherwise stated the results shown in this report only apply to the sample as received. Without prior written permission of the company, this test report cannot be reproduced, except in full. Any inquiry about this report, please raise from the date of receipt of the report within 30 days, overdue will not be accept. Items marked with "n" means they are not accredited by CNAS (if with CNAS logo), "s" means the item of subcontractor. All or part of items of this report are not in the accredited scope of CMA and cannot be as domestic social impartiality proof data.



Test Report

Report No.: CTT2405015894EN

Page 2 of 3

Test Result(s):

Nickel Release - Annex XVII items 27 of the REACH Regulation (EC) No 1907/2006 & amended (EC) No. 552/2009

Method: EN 1811:2023 & EN 12472:2020, analyzed by Inductively Coupled Plasma Optical Emission Spectrometer (ICP-OES) .

Material No.	LOQ ($\mu\text{g}\cdot\text{cm}^{-2}\cdot\text{week}^{-1}$)	Limit ($\mu\text{g}\cdot\text{cm}^{-2}\cdot\text{week}^{-1}$)	Sample (s)	Surface Area (cm^2)	Volume of test solution (mL)	Result ($\mu\text{g}\cdot\text{cm}^{-2}\cdot\text{week}^{-1}$)	Conclusion
1	0.05	0.88	1	1.7	2	N.D.	PASS
	0.05	0.88	2	1.7	2	N.D.	
	0.05	0.88	3	1.7	2	N.D.	

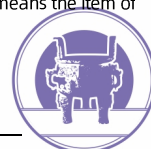
NOTE:

- $\mu\text{g}\cdot\text{cm}^{-2}\cdot\text{week}^{-1}$ = microgram per square centimeter per week.
- N.D. = Not Detected (Less than LOQ, LOQ = Limit of Quantitation).
- Products intended to come into direct and prolonged contact with the skin, Articles with a migration limit of $0.5\mu\text{g}\cdot\text{cm}^{-2}\cdot\text{week}^{-1}$:
 - An article will be deemed to be non-compliant when the nickel release value is greater than $0.88\mu\text{g}\cdot\text{cm}^{-2}\cdot\text{week}^{-1}$.
 - An article will be deemed to be compliant when the nickel release value is less than or equal to $0.88\mu\text{g}\cdot\text{cm}^{-2}\cdot\text{week}^{-1}$.
- All post assemblies which are inserted into pierced ears and other pierced parts of the human body, Articles with the migration limit of $0.2\mu\text{g}\cdot\text{cm}^{-2}\cdot\text{week}^{-1}$:
 - An article will be deemed to be non-compliant when the nickel release value is greater than or equal to $0.35\mu\text{g}\cdot\text{cm}^{-2}\cdot\text{week}^{-1}$.
 - An article will be deemed to be compliant when the nickel release value is less than $0.35\mu\text{g}\cdot\text{cm}^{-2}\cdot\text{week}^{-1}$.

Test Material List

Material No.	Sample Description	Location
1	Silvery metal	Individual

This test report is issued by the company subject to its General Conditions of Services and accessible at <http://www.cttlab.com/order/202103190908290166.pdf>. The sample is provided by the applicant, our company is not responsible for the integrity, authenticity and identification information of the sample. Unless otherwise stated the results shown in this report only apply to the sample as received. Without prior written permission of the company, this test report cannot be reproduced, except in full. Any inquiry about this report, please raise from the date of receipt of the report within 30 days, overdue will not be accept. Items marked with "n" means they are not accredited by CNAS (if with CNAS logo), "s" means the item of subcontractor. All or part of items of this report are not in the accredited scope of CMA and cannot be as domestic social impartiality proof data.

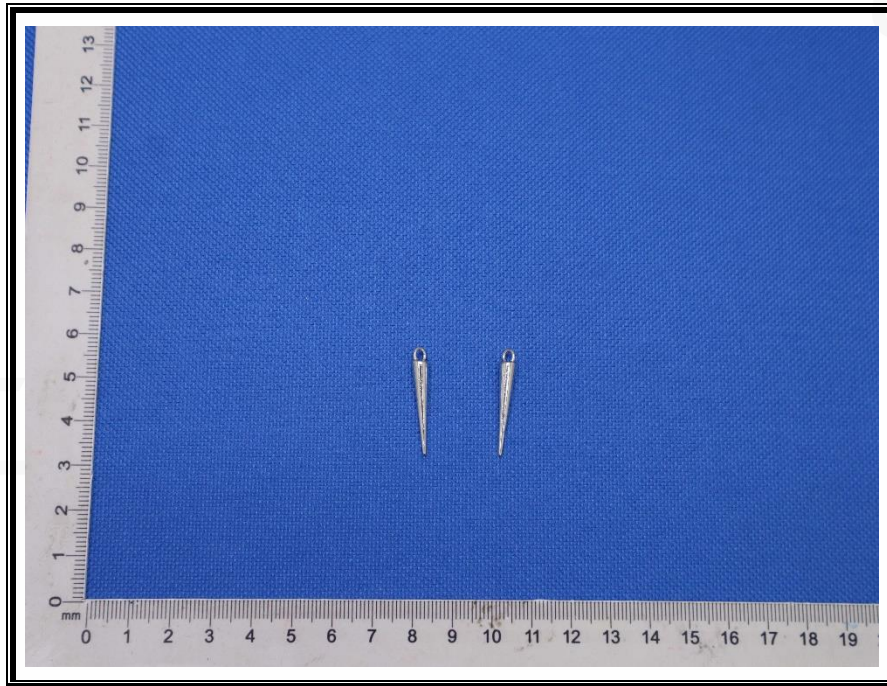


Test Report

Report No.: CTT2405015894EN

Page 3 of 3

Photo of Sample:



End of Report

This test report is issued by the company subject to its General Conditions of Services and accessible at <http://www.cttlab.com/order/202103190908290166.pdf>. The sample is provided by the applicant, our company is not responsible for the integrity, authenticity and identification information of the sample. Unless otherwise stated the results shown in this report only apply to the sample as received. Without prior written permission of the company, this test report cannot be reproduced, except in full. Any inquiry about this report, please raise from the date of receipt of the report within 30 days, overdue will not be accept. Items marked with "n" means they are not accredited by CNAS (if with CNAS logo), "s" means the item of subcontractor. All or part of items of this report are not in the accredited scope of CMA and cannot be as domestic social impartiality proof data.

